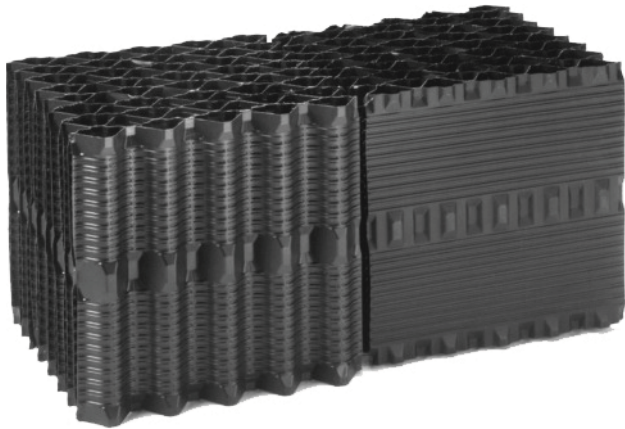


# OP VAF-19 Low Fouling Film Fill

Opti-Pac VAF-19 is a proven non-fouling film fill. The module design incorporates two alternating sheet configurations together, optimizing thermal performance without sacrificing non-fouling properties.


Opti-Pac VAF-19 media is manufactured from rigid PVC sheets for cooling tower heat transfer applications. The media is fabricated from corrugated PVC sheets that are resistant to UV, rot, fungus and organic and inorganic solvents, acids and alkalis and chemicals normally found in cooling tower waters.



Modules are fabricated in 12", 24" and 48" depths, 12" to 24" widths, and in lengths up to 10'-0" in 2' increments. Custom dimension modules are available upon request. Standard sheet mil thickness is 15 mil after forming.

PVC sheets have the following properties:

| Physical Property        | ASTM Test | Units                 | Value                                     |
|--------------------------|-----------|-----------------------|---|
| Density                  | D772      | g/cm <sup>3</sup>     | 1.39 - 1.45                               |
| Tensile Strength (yield) | D882      | lb/in <sup>2</sup>    | 6,000 min                                 |
| Flexural Strength        | D790      | lb/in <sup>2</sup>    | 11,000                                    |
| Flexural Modulus         | D790      | lb/in <sup>2</sup>    | 525,000                                   |
| Stiffness in Flexure     | D747      | lb/in <sup>2</sup>    | 525,000 min                               |
| Gardner Impact Strength  | D4226     | in lb/mil             | 1.0 min                                   |
| Tensile Impact Strength  | D1822     | ft lb/in <sup>2</sup> | 255 min                                   |
| Heat Deflection          | D648      | Deg F. (264 psi)      | 162 min                                   |
| Flammability             | D635      |                       | Self extinguishing<br>Less than 5 seconds |
| Flame Spread Rate        | E 84      |                       | Less than 20                              |

|  |                            |   |               |        |  |  |  |       |
|--|----------------------------|---|---------------|--------|--|--|--|-------|
|  | PROJECT NAME AND LOCATION: | THIS DRAWING IS THE SOLE PROPERTY OF COOLING TOWER DEPOT INC. USE SHALL BE LIMITED TO THE PROJECT FOR WHICH IT IS INTENDED. NO REPRODUCTION SHALL BE MADE NOR SHALL THIS INFORMATION BE MADE AVAILABLE TO THIRD PARTIES WITHOUT THE PRIOR WRITTEN CONSENT BY COOLING TOWER DEPOT INC. ANY AND ALL PROPRIETARY RIGHTS TO THIS INFORMATION AND DESIGN ARE THE SOLE PROPERTY OF COOLING TOWER DEPOT INC. |               |        |  |  | REV: 0<br>SHEET: 1 of 1<br>SCALE: NO SCALE | A-100 |
|  | MODEL NO.:                 | DESIGNED BY: _____ CHECKED BY: _____ APPROVED BY: _____ DATE: _____<br>DESCRIPTION: _____   |               |        |  |  |  |       |
|  | DWG NAME:                  | COOLING TOWER DEPOT, INC<br>651 CORPORATE CIRCLE, STE. 206<br>GOLDEN, CO 80401<br>720-746-1234  |               |        |  |  |  |       |
|  | DRAWING NUMBER: A-100      | JOB NUMBER:   | SHEET: 1 of 1 | REV: 0 |  |  |  |       |
| SCALE: NO SCALE  | COMMENTS:                  |   |               |        |  |  |  |       |