

COOLING TOWER DEPOT™

The Depot of All Cooling Towers
www.coolingtowerdepot.com

Cooling Tower Depot Inc.
651 Corporate Circle
Suite 206
Golden, CO 80401
(720) 746-1234 Phone
(720) 746-1110 Fax



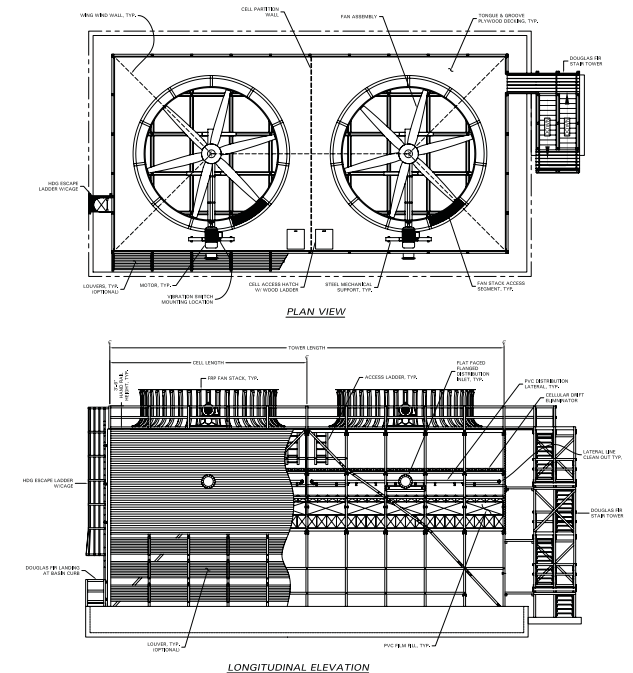
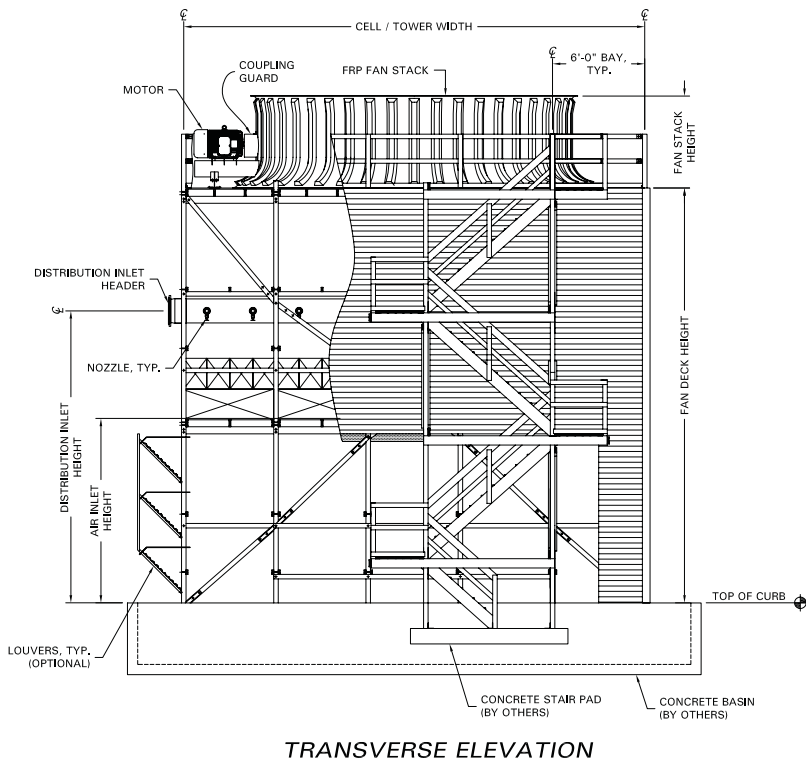
CFD Series

Counterflow - Film Fill - Douglas Fir Structure

Heavy duty industrial counterflow film fill douglas fir tower structure. Low fouling and high performance film fill.

Low fouling and high performance film fill which optimizes tower size, pump head and thermal capacity.

CFD Series Cooling Tower Drawing



	PROJECT NAME AND LOCATION:	CFD SERIES		
	MODEL NO.:	CFD SERIES		
	DWG NAME:	GENERAL ARRANGEMENT		
	DRAWING NUMBER:	JOB NUMBER:	SHEET:	REV:
	A-100		1 of 1	0
SCALE:	NO SCALE			

THIS DRAWING IS THE SOLE PROPERTY OF COOLING TOWER DEPOT INC. USE SHALL BE LIMITED TO THE PROJECT FOR WHICH IT IS INTENDED. NO REPRODUCTION SHALL BE MADE NOR SHALL THIS INFORMATION BE MADE AVAILABLE TO THIRD PARTIES WITHOUT THE PRIOR WRITTEN CONSENT BY COOLING TOWER DEPOT INC. ANY AND ALL PROPRIETARY RIGHTS TO THIS INFORMATION AND DESIGN ARE THE SOLE PROPERTY OF COOLING TOWER DEPOT INC.					
REVISIONS					
REV.	DESCRIPTION	DESIGNED BY:	CHECKED BY:	APPROVED BY:	DATE:
0					
1					
2					
3					
4					

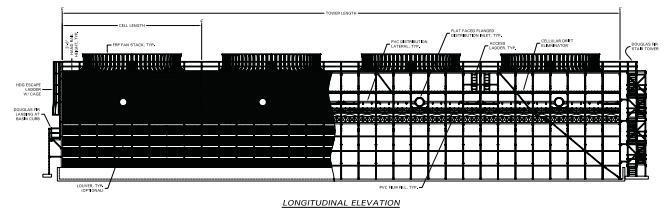
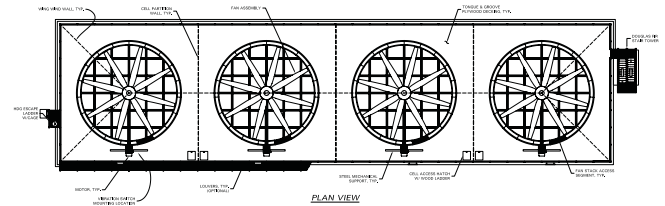
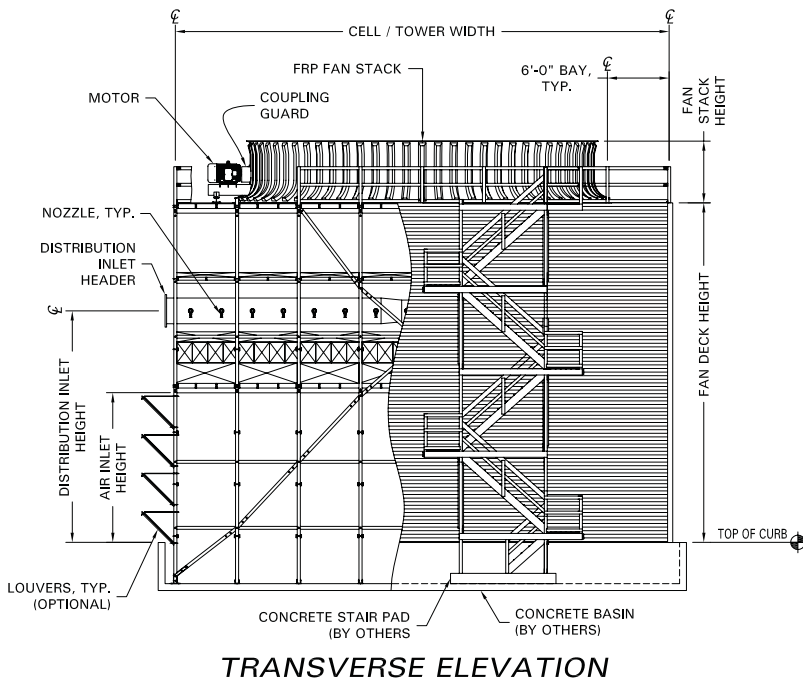
COOLING TOWER DEPOT, INC 651 CORPORATE CIRCLE, STE. 206 GOLDEN, CO 80401 720-746-1234		JOB NUMBER: SCALE: NO SCALE	REV: 0 SHEET: 1 of 1 DRAWING NUMBER: A-100
---	--	-----------------------------------	---



**Ethanol Series
Counterflow - Film Fill - Douglas Fir Structure.**

Heavy duty industrial counterflow film fill with multiple tower structures available. Low fouling and high performance film fill. Specifically designed for ethanol plant duty.

Ethanol Series Cooling Tower Drawing



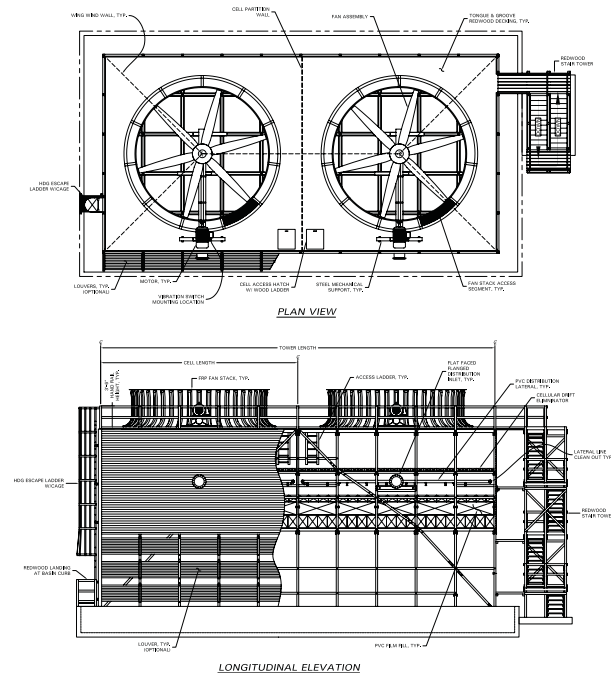
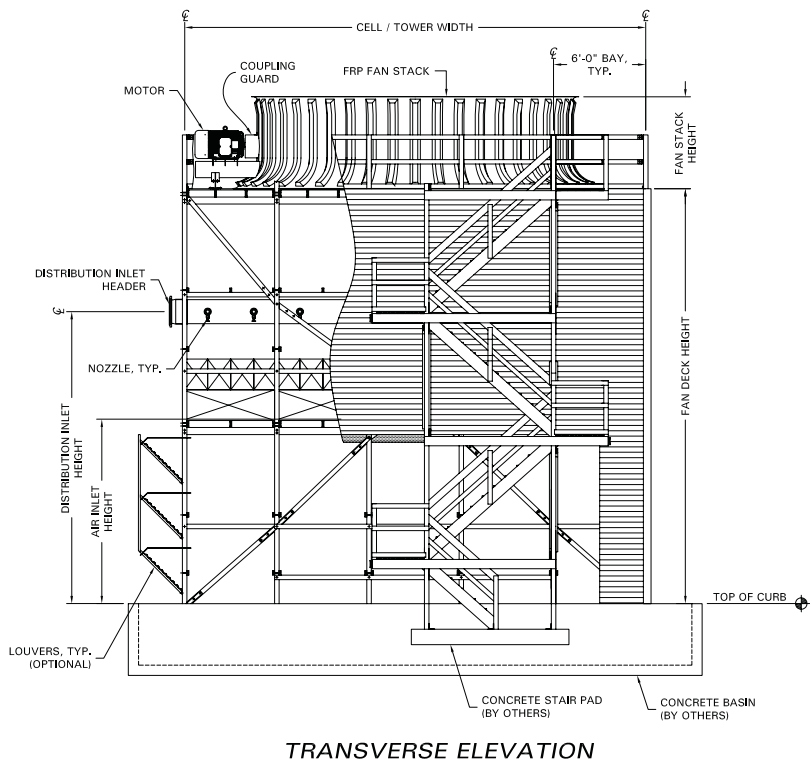
	PROJECT NAME AND LOCATION:	ETHANOL SERIES				THIS DRAWING IS THE SOLE PROPERTY OF COOLING TOWER DEPOT INC. USE SHALL BE LIMITED TO THE PROJECT FOR WHICH IT IS INTENDED, NO REPRODUCTION SHALL BE MADE NOR SHALL THIS INFORMATION BE MADE AVAILABLE TO THIRD PARTIES WITHOUT THE PRIOR WRITTEN CONSENT BY COOLING TOWER DEPOT INC. ANY AND ALL PROPRIETARY RIGHTS TO THIS INFORMATION AND DESIGN ARE THE SOLE PROPERTY OF COOLING TOWER DEPOT INC.	COOLING TOWER DEPOT, INC 651 CORPORATE CIRCLE, STE. 206 GOLDEN, CO 80401 720-746-1234	JOB NUMBER: 0 SCALE: NO SCALE	SHEET: 1 of 1 NO SCALE	DRAWING NUMBER: A-100
	DWG NAME:	GENERAL ARRANGEMENT								
	DRAWING NUMBER:	JOB NUMBER:	SHEET:	REV:	0					
	SCALE:	NO SCALE								



CFR Series Counterflow - Film Fill - Redwood Structure.

Heavy duty industrial counterflow film fill redwood tower structure. Low fouling and high performance film fill.

CFR Series Cooling Tower Drawing



	PROJECT NAME AND LOCATION:	CFR SERIES		
	MODEL NO.:	CFR SERIES		
	DWG NAME:	GENERAL ARRANGEMENT		
	DRAWING NUMBER:	JOB NUMBER:	SHEET	REV:
	A-100		1 of 1	0
SCALE:	NO SCALE			

THIS DRAWING IS THE SOLE PROPERTY OF COOLING TOWER DEPOT INC. USE SHALL BE LIMITED TO THE PROJECT FOR WHICH IT IS INTENDED. NO REPRODUCTION SHALL BE MADE NOR SHALL THIS INFORMATION BE MADE AVAILABLE TO THIRD PARTIES WITHOUT THE PRIOR WRITTEN CONSENT BY COOLING TOWER DEPOT INC. ANY AND ALL PROPRIETARY RIGHTS TO THIS INFORMATION AND DESIGN ARE THE SOLE PROPERTY OF COOLING TOWER DEPOT INC.					
REVISIONS					
REV.	DESCRIPTION	DESIGNED BY:	CHECKED BY:	APPROVED BY:	DATE:
0					
1					
2					
3					
4					

COOLING TOWER DEPOT, INC 651 CORPORATE CIRCLE, STE. 206 GOLDEN, CO 80401 720-746-1234		JOB NUMBER: SCALE: NO SCALE	REV: 0 SHEET: 1 of 1 DRAWING NUMBER: A-100
--	--	--	--

CFF Series Cooling Tower Detail

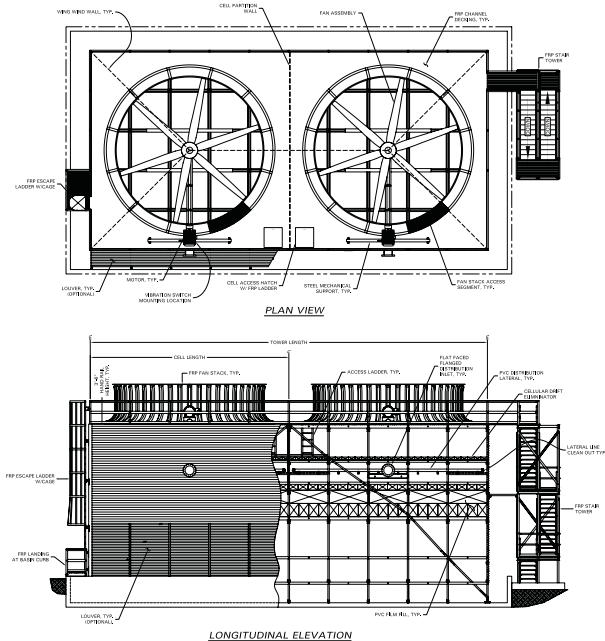
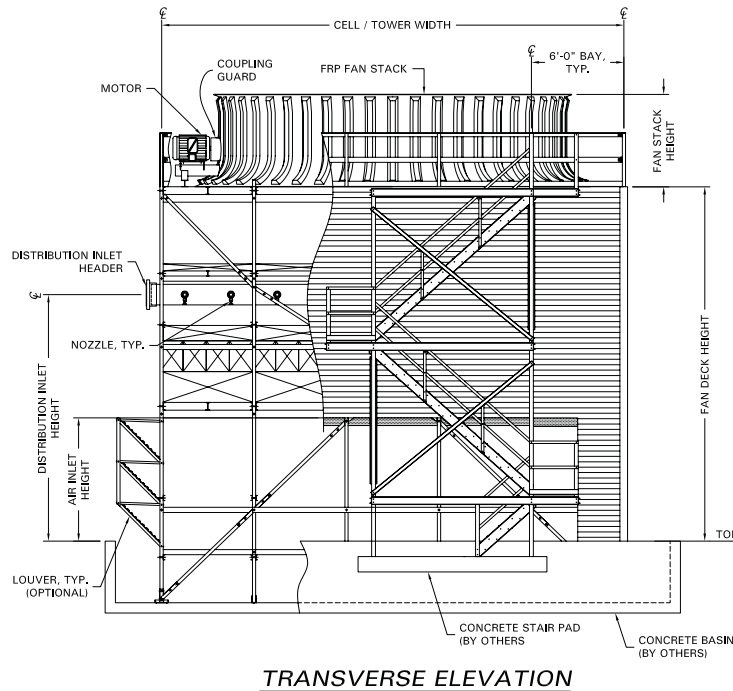


CFF Series

Counterflow - Film Fill - Pultruded FRP Structure (Our most popular!)

Heavy duty industrial counterflow, available in pultruded FRP structure. Available with low fouling film fill, high efficiency film fill, or at your option, polypropylene splash fill for poor water quality.

CFF Series Cooling Tower Drawing



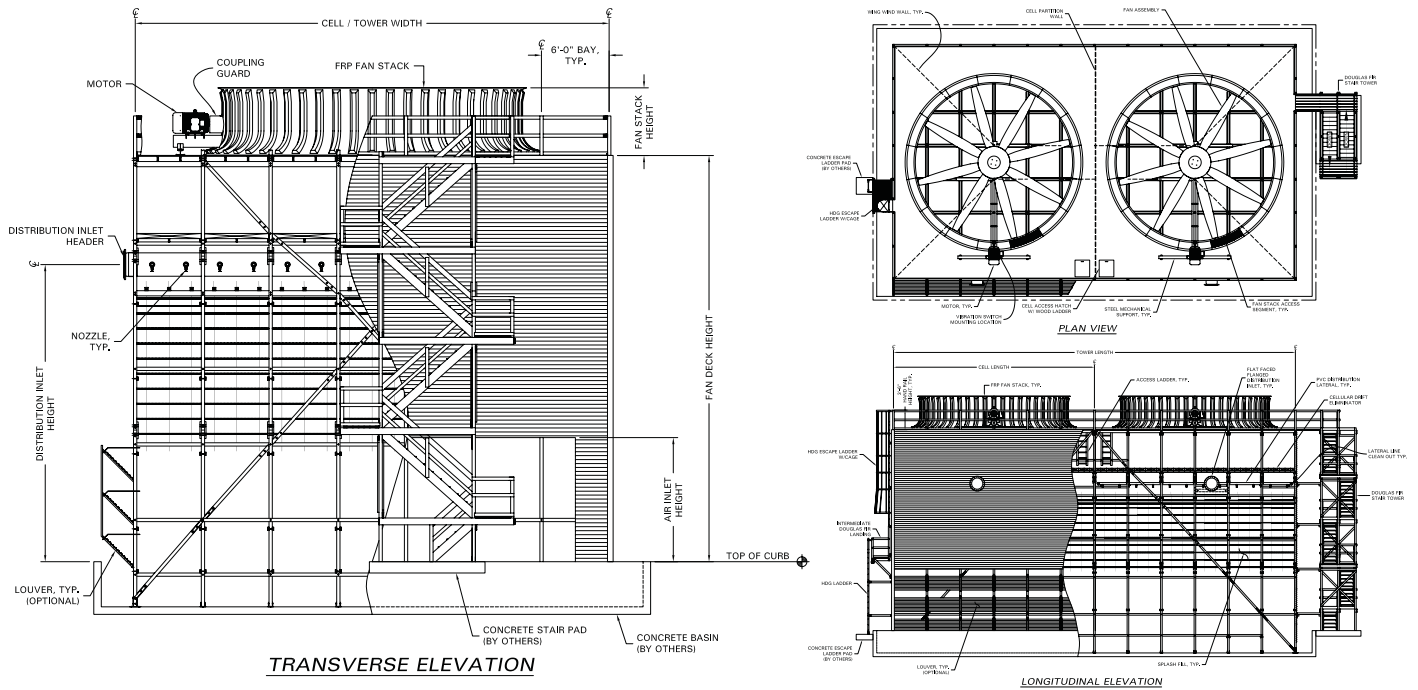
	PROJECT NAME AND LOCATION: CFF SERIES	THIS DRAWING IS THE SOLE PROPERTY OF COOLING TOWER DEPOT INC. USE SHALL BE LIMITED TO THE PROJECT FOR WHICH IT IS INTENDED. NO REPRODUCTION SHALL BE MADE NOR SHALL THIS INFORMATION BE MADE AVAILABLE TO THIRD PARTIES WITHOUT THE PRIOR WRITTEN CONSENT BY COOLING TOWER DEPOT INC. ANY AND ALL PROPRIETARY RIGHTS TO THIS INFORMATION AND DESIGN ARE THE SOLE PROPERTY OF COOLING TOWER DEPOT INC.				COOLING TOWER DEPOT, INC 651 CORPORATE CIRCLE, STE. 206 GOLDEN, CO 80401 720-746-1234	JOB NUMBER: 0 SCALE: NO SCALE	SHEET: A-100 1 of 1	DRAWING NUMBER: A-100
	DWG NAME: GENERAL ARRANGEMENT	REV. 0 SHEET 1 of 1 REV: 0	DESIGNED BY: CHECKED BY: APPROVED BY: DATE:						



CSD Series Counterflow - Splash Fill - Douglas Fir Structure.

Heavy duty industrial counterflow, available in douglas fir structure. Splash fill for poor water quality.

CSD Series Cooling Tower Drawing



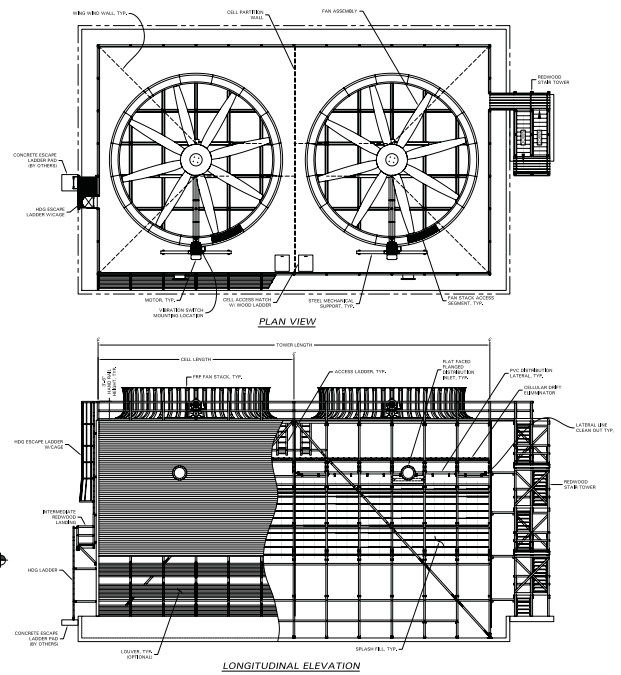
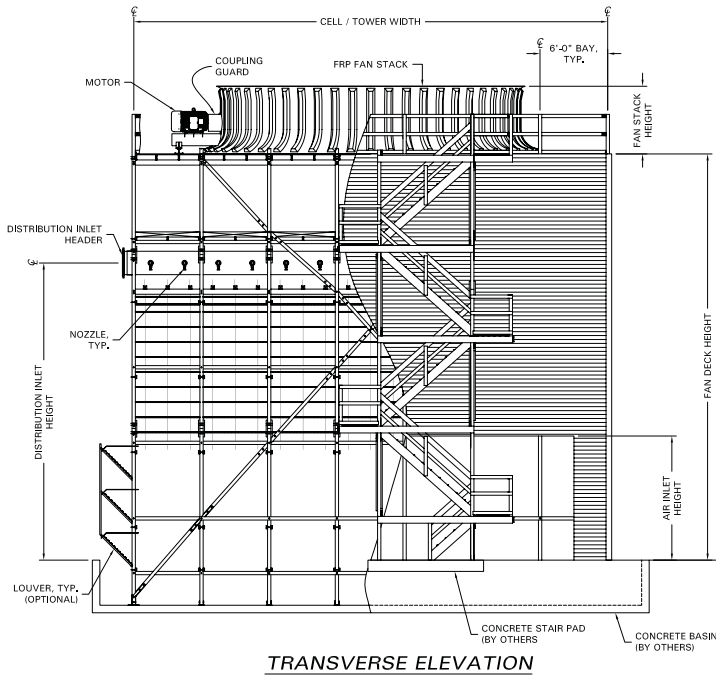
	PROJECT NAME AND LOCATION:	THIS DRAWING IS THE SOLE PROPERTY OF COOLING TOWER DEPOT INC. USE SHALL BE LIMITED TO THE PROJECT FOR WHICH IT IS INTENDED, NO REPRODUCTION SHALL BE MADE NOR SHALL THIS INFORMATION BE MADE AVAILABLE TO THIRD PARTIES WITHOUT THE PRIOR WRITTEN CONSENT BY COOLING TOWER DEPOT INC. ANY AND ALL PROPRIETARY RIGHTS TO THIS INFORMATION AND DESIGN ARE THE SOLE PROPERTY OF COOLING TOWER DEPOT INC.				JOB NUMBER: 0 SCALE: NO SCALE SHEET: 1 of 1 REV: 0	PROJECT NUMBER: A-100
	MODEL NO.:	CSD SERIES					
	DWG NAME:	GENERAL ARRANGEMENT					
	DRAWING NUMBER:	JOB NUMBER:	SHEET:	REV:			
SCALE:	NO SCALE	COMMENTS:					
		REVISIONS DESIGNED BY: _____ CHECKED BY: _____ APPROVED BY: _____ DATE: _____ REV. 0 1 2 3 4		COOLING TOWER DEPOT, INC 651 CORPORATE CIRCLE, STE. 206 GOLDEN, CO 80401 720-746-1234			



**CSR Series
Counterflow - Splash Fill - Redwood Structure.**

Heavy duty industrial counterflow, available in redwood structure. Splash fill for poor water quality.

CSR Series Cooling Tower Drawing



COOLING TOWER DEPOT	PROJECT NAME AND LOCATION:	CSR SERIES		
	MODEL NO.:	CSR SERIES		
	DWG NAME:	GENERAL ARRANGEMENT		
	DRAWING NUMBER:	JOB NUMBER:	SHEET	REV:
	A-100		1 of 1	0
SCALE:	NO SCALE			

THIS DRAWING IS THE SOLE PROPERTY OF COOLING TOWER DEPOT INC. USE SHALL BE LIMITED TO THE PROJECT FOR WHICH IT IS INTENDED, NO REPRODUCTION SHALL BE MADE NOR SHALL THIS INFORMATION BE MADE AVAILABLE TO THIRD PARTIES WITHOUT THE PRIOR WRITTEN CONSENT BY COOLING TOWER DEPOT INC. ANY AND ALL PROPRIETARY RIGHTS TO THIS INFORMATION AND DESIGN ARE THE SOLE PROPERTY OF COOLING TOWER DEPOT INC.					
REVISIONS					
REV.	DESCRIPTION	DESIGNED BY:	CHECKED BY:	APPROVED BY:	DATE:
0					
1					
2					
3					
4					

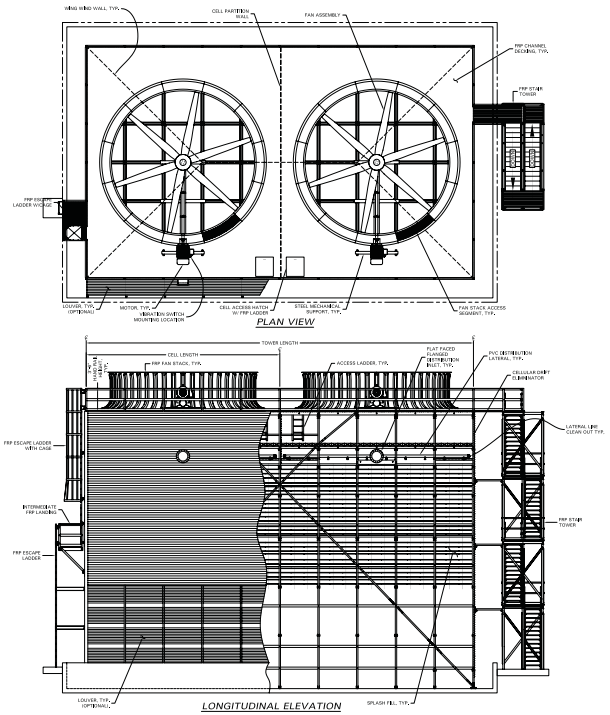
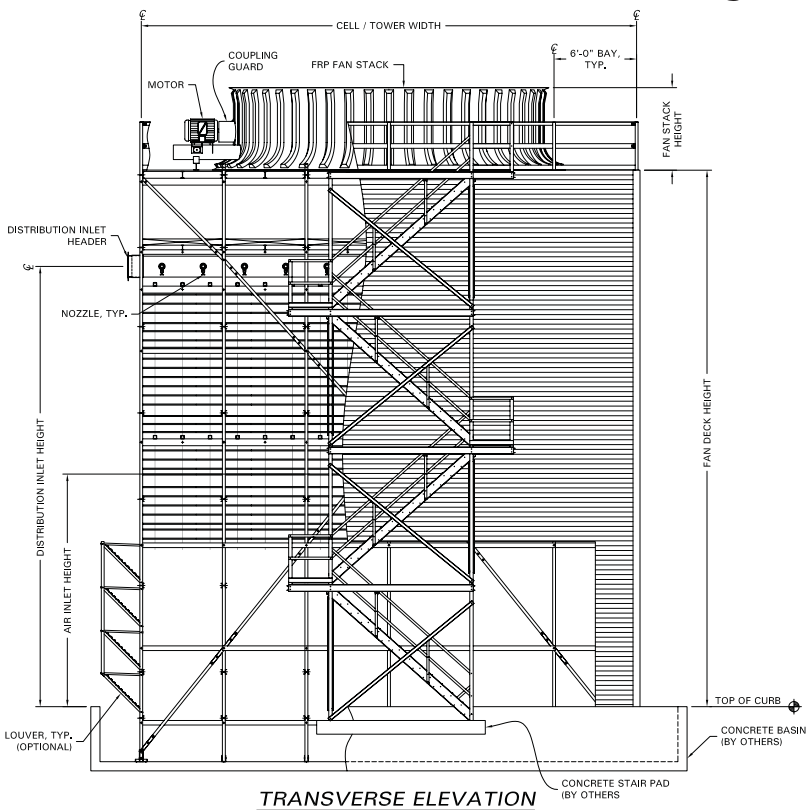
COOLING TOWER DEPOT, INC		A-100
651 CORPORATE CIRCLE, STE. 206		
GOLDEN, CO 80401		
720-746-1234		
JOB NUMBER:	SCALE:	
0	NO SCALE	



**CSF Series
Counterflow - Splash Fill - Pultruded FRP
Structure.**

Heavy duty industrial counterflow, available with pultruded FRP structure. Splash fill for poor water quality.

CSF Series Cooling Tower Drawing



COOLING TOWER DEPOT	PROJECT NAME AND LOCATION:	CSF SERIES		
	MODEL NO.:	CSF SERIES		
	DWG NAME:	GENERAL ARRANGEMENT		
	DRAWING NUMBER:	JOB NUMBER:	SHEET	REV:
	A-100		1 of 1	0
SCALE:	NO SCALE			

THIS DRAWING IS THE SOLE PROPERTY OF COOLING TOWER DEPOT INC. USE SHALL BE LIMITED TO THE PROJECT FOR WHICH IT IS INTENDED, NO REPRODUCTION SHALL BE MADE NOR SHALL THIS INFORMATION BE MADE AVAILABLE TO THIRD PARTIES WITHOUT THE PRIOR WRITTEN CONSENT BY COOLING TOWER DEPOT INC. ANY AND ALL PROPRIETARY RIGHTS TO THIS INFORMATION AND DESIGN ARE THE SOLE PROPERTY OF COOLING TOWER DEPOT INC.

REV.	DESCRIPTION	DESIGNED BY:	CHECKED BY:	APPROVED BY:	DATE:
0					
1					
2					
3					
4					

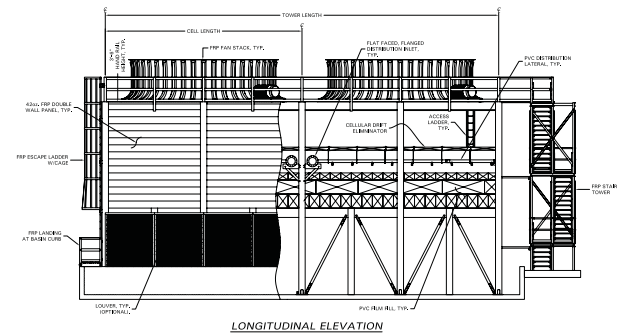
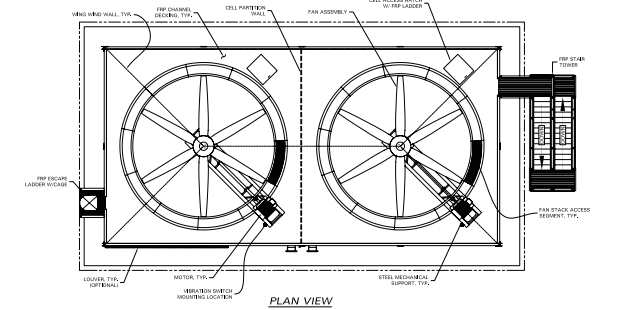
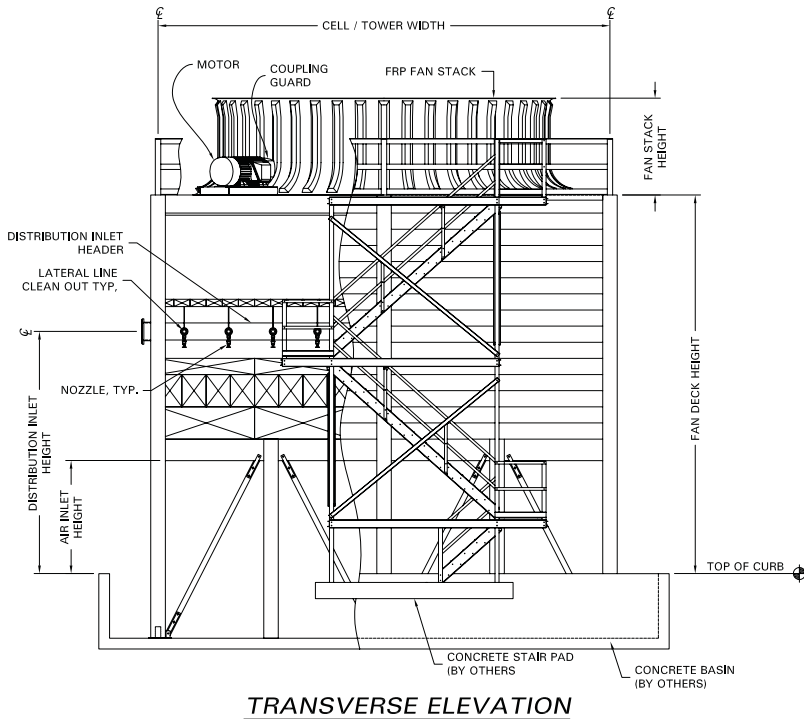
COOLING TOWER DEPOT, INC		JOB NUMBER: NO SCALE	REV. NUMBER: 0	DRAWING NUMBER: A-100
651 CORPORATE CIRCLE, STE. 206				
GOLDEN, CO 80401				
720-746-1234				



CFU Series Counterflow - Film, Splash, or Ceramic Tile Fill - Double Wall.

Our most durable pultruded FRP structure double wall casing. This series is available with ceramic tile fill, low fouling PVC, or high efficiency film fill. Even available with polypropylene splash fill for poor water quality.

CFU Series Cooling Tower Drawing



	PROJECT NAME AND LOCATION:	CFU SERIES		
	MODEL NO.:	CFU SERIES		
	DWG NAME:	GENERAL ARRANGEMENT		
	DRAWING NUMBER:	JOB NUMBER:	SHEET	REV:
	A-100		1 of 1	0
SCALE:	NO SCALE	COMMENTS:		

THIS DRAWING IS THE SOLE PROPERTY OF COOLING TOWER DEPOT INC. USE SHALL BE LIMITED TO THE PROJECT FOR WHICH IT IS INTENDED. NO REPRODUCTION SHALL BE MADE NOR SHALL THIS INFORMATION BE MADE AVAILABLE TO THIRD PARTIES WITHOUT THE PRIOR WRITTEN CONSENT BY COOLING TOWER DEPOT INC. ANY AND ALL PROPRIETARY RIGHTS TO THIS INFORMATION AND DESIGN ARE THE SOLE PROPERTY OF COOLING TOWER DEPOT INC.					
REV.	DESCRIPTION	DESIGNED BY:	CHECKED BY:	APPROVED BY:	DATE:
0					
1					
2					
3					
4					

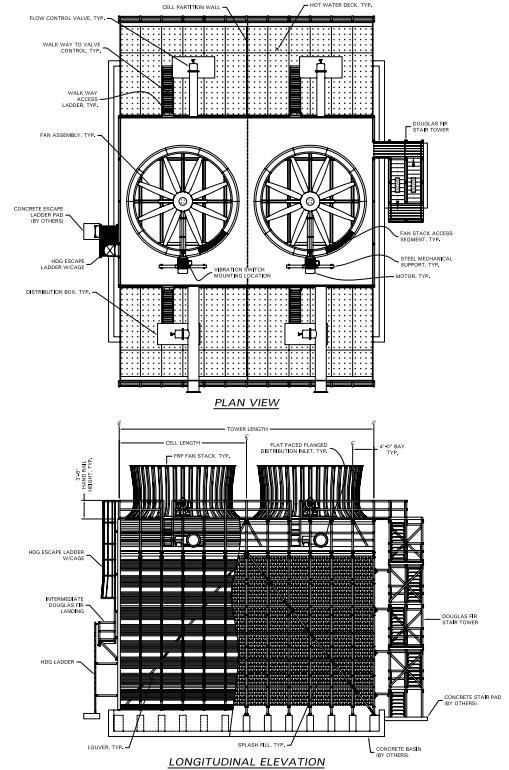
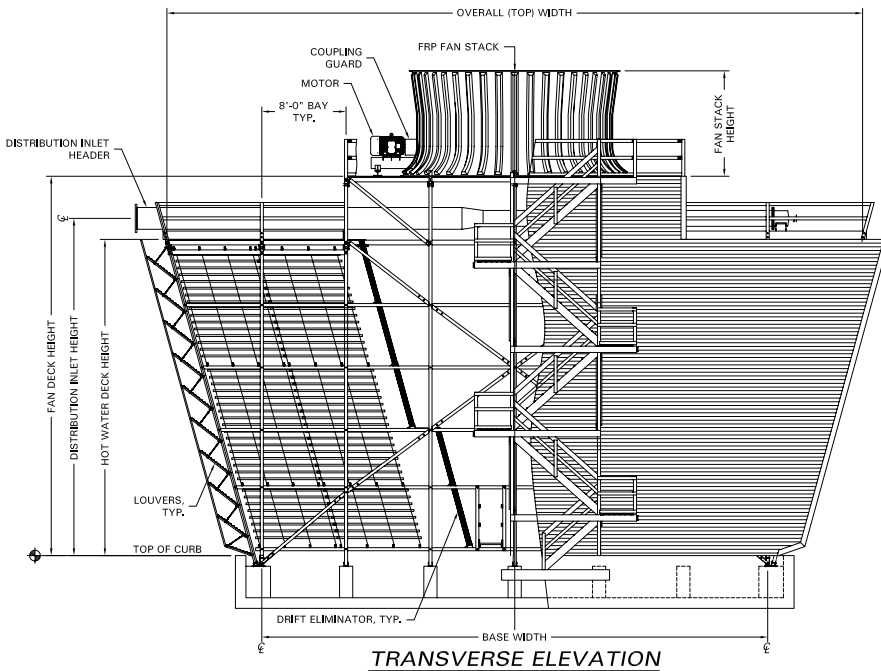
COOLING TOWER DEPOT, INC 651 CORPORATE CIRCLE, STE. 206 GOLDEN, CO 80401 720-746-1234		JOB NUMBER: SCALE: NO SCALE	SHEET 1 OF 1	DRAWING NUMBER: A-100
--	--	--	-------------------------------------	---------------------------------



**XFD Series
 Crossflow - Splash Fill - Douglas Fir Structure.**

Heavy duty industrial crossflow available in douglas fir treated structure and a wide range of flows and materials with a large list of options.

XFD Series Cooling Tower Drawing



COOLING TOWER DEPOT	PROJECT NAME AND LOCATION:	XFD SERIES		
	MODEL NO.:	XFD SERIES		
	DWG NAME:	GENERAL ARRANGEMENT		
	DRAWING NUMBER:	JOB NUMBER:	SHEET	REV.
	A-100		1 of 1	0
SCALE:	NO SCALE			

THIS DRAWING IS THE SOLE PROPERTY OF COOLING TOWER DEPOT INC. USE SHALL BE LIMITED TO THE PROJECT FOR WHICH IT IS INTENDED. NO REPRODUCTION SHALL BE MADE NOR SHALL THIS INFORMATION BE MADE AVAILABLE TO THIRD PARTIES WITHOUT THE PRIOR WRITTEN CONSENT BY COOLING TOWER DEPOT INC. ANY AND ALL PROPRIETARY RIGHTS TO THIS INFORMATION AND DESIGN ARE THE SOLE PROPERTY OF COOLING TOWER DEPOT INC.

REV.	DESCRIPTION	DESIGNED BY:	CHECKED BY:	APPROVED BY:	DATE:
0					
1					
2					
3					
4					

COOLING TOWER DEPOT, INC 651 CORPORATE CIRCLE, STE. 206 GOLDEN, CO 80401 720-746-1234	JOB NUMBER:	NO SCALE	SCALE:	1 in 1
	REV.:	0	SHEET:	1 of 1
	DWG. NO.:	A-100	DATE:	
	PROJECT NAME:	XFD SERIES	LOCATION:	
	DATE:		SCALE:	NO SCALE

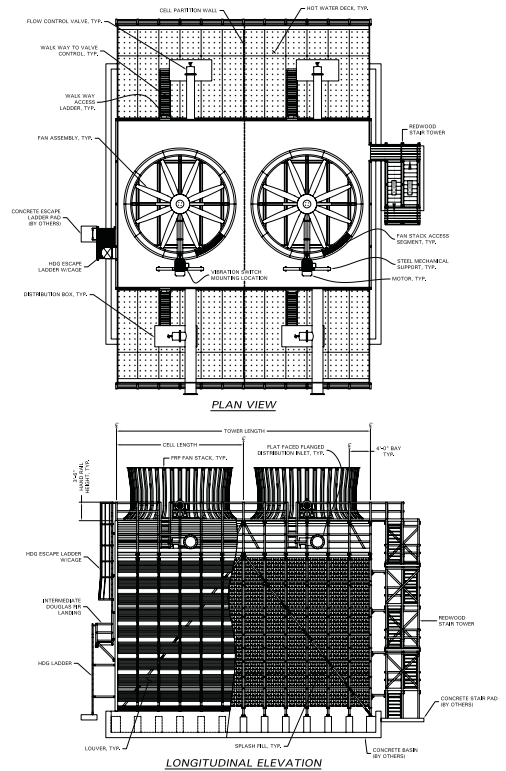
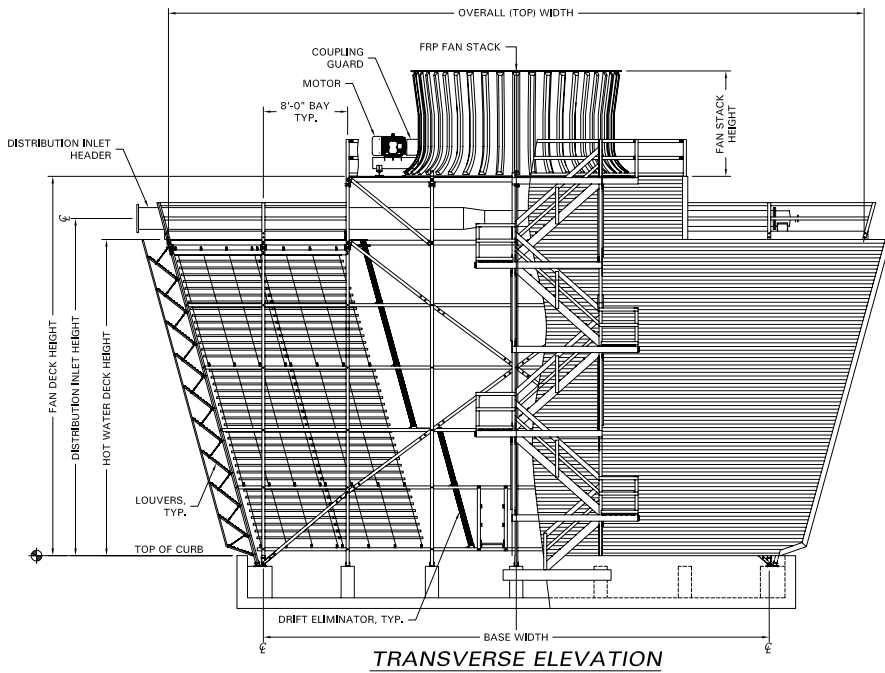
XFR Series Cooling Tower Detail



XFR Series Crossflow - Splash Fill - Redwood Structure.

Heavy duty industrial crossflow available in redwood treated structure and a wide range of flows and materials with a large list of options.

XFR Series Cooling Tower Drawing



COOLING TOWER DEPOT	PROJECT NAME AND LOCATION:		XFR SERIES	
	MODEL NO.:		GENERAL ARRANGEMENT	
	DWG NAME:			
	DRAWING NUMBER:	JOB NUMBER:	SHEET	REV:
	A-100		1 of 1	0
SCALE:	NO SCALE COMMENTS			

THIS DRAWING IS THE SOLE PROPERTY OF COOLING TOWER DEPOT INC. USE SHALL BE LIMITED TO THE PROJECT FOR WHICH IT IS INTENDED. NO REPRODUCTION SHALL BE MADE NOR SHALL THIS INFORMATION BE MADE AVAILABLE TO THIRD PARTIES WITHOUT THE PRIOR WRITTEN CONSENT BY COOLING TOWER DEPOT INC. ANY AND ALL PROPRIETARY RIGHTS TO THIS INFORMATION AND DESIGN ARE THE SOLE PROPERTY OF COOLING TOWER DEPOT INC.

REV.	DESCRIPTION	DESIGNED BY:	CHECKED BY:	APPROVED BY:	DATE:
0					
1					
2					
3					
4					

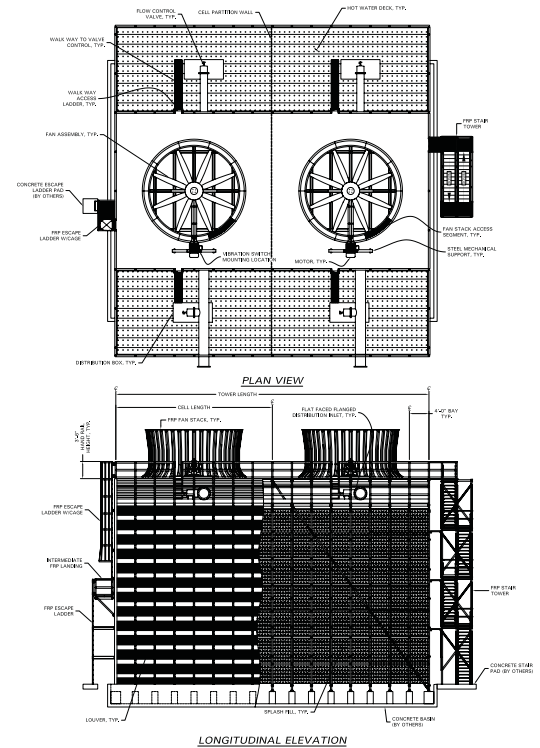
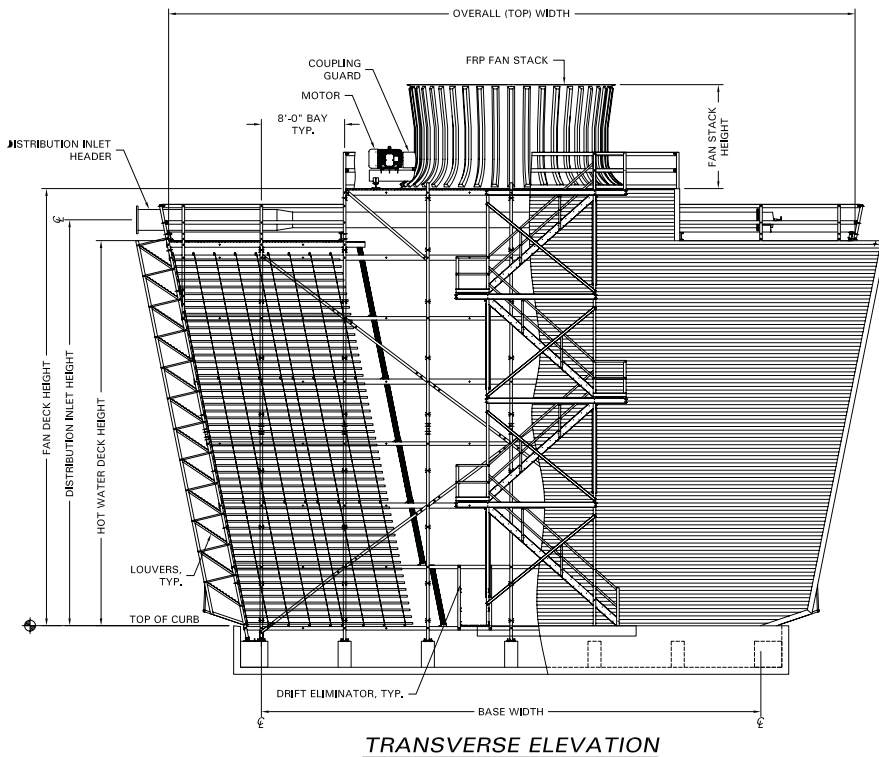
COOLING TOWER DEPOT, INC		JOB NUMBER: NO SCALE	JOB NUMBER: 0	SCALE: 1 in 1	SHEET 1 of 1	DRAWING NUMBER: A-100
651 CORPORATE CIRCLE, STE. 206						
GOLDEN, CO 80401 720-746-1234						



XFF Series Crossflow - Splash Fill - Pultruded FRP Structure (Our most popular XF model!).

Heavy duty industrial crossflow with pultruded FRP structure and decking, thus a complete composite tower with wide range of flows and materials with a large list of options.

XFF Series Cooling Tower Drawing



	PROJECT NAME AND LOCATION:	XFF SERIES		
	MODEL NO.:	XFF SERIES		
	DWG NAME:	GENERAL ARRANGEMENT		
	DRAWING NUMBER:	JOB NUMBER:	SHEET	REV:
	A-100		1 of 1	0
SCALE:	NO SCALE			

THIS DRAWING IS THE SOLE PROPERTY OF COOLING TOWER DEPOT INC. USE SHALL BE LIMITED TO THE PROJECT FOR WHICH IT IS INTENDED. NO REPRODUCTION SHALL BE MADE NOR SHALL THIS INFORMATION BE MADE AVAILABLE TO THIRD PARTIES WITHOUT THE PRIOR WRITTEN CONSENT BY COOLING TOWER DEPOT INC. ANY AND ALL PROPRIETARY RIGHTS TO THIS INFORMATION AND DESIGN ARE THE SOLE PROPERTY OF COOLING TOWER DEPOT INC.

REV.	DESCRIPTION	DESIGNED BY:	CHECKED BY:	APPROVED BY:	DATE:
0					
1					
2					
3					
4					

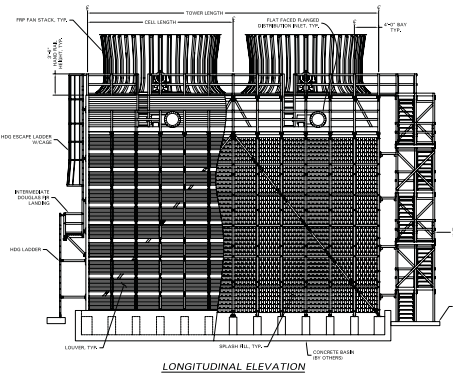
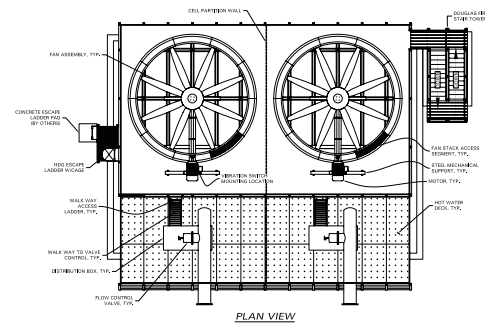
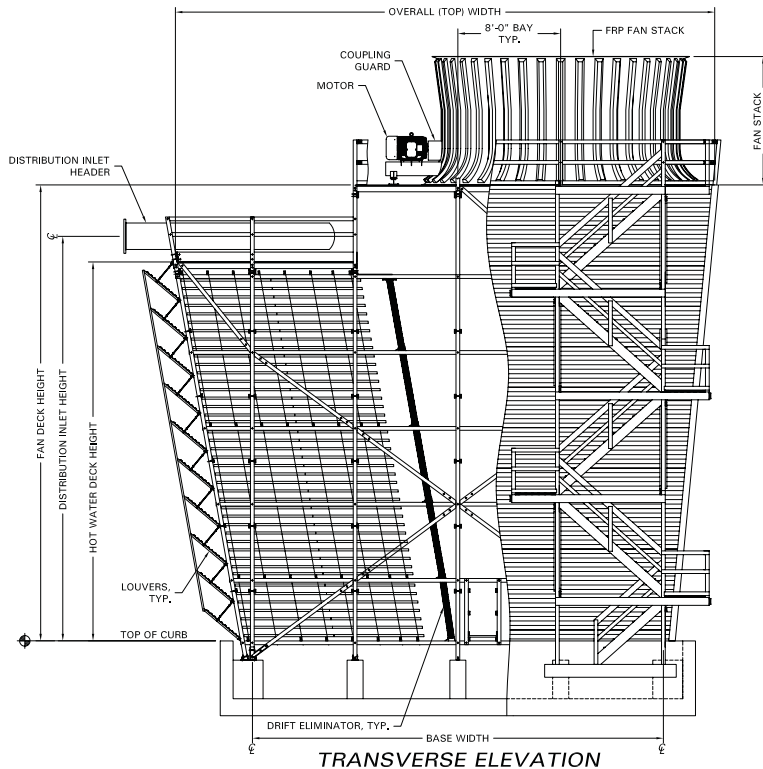
	COOLING TOWER DEPOT, INC 651 CORPORATE CIRCLE, STE. 206 GOLDEN, CO 80401 720-746-1234	
	JOB NUMBER:	NO SCALE
	SCALE:	NO SCALE
	REV.:	A-100



**XFD-R-One Series
Crossflow - Splash Fill - Douglas Fir, Redwood or
Pultruded FRP Structure.**

Heavy duty industrial crossflow available in douglas fir or redwood treated structure and a wide range of flows and materials with a large list of options. However there is an Air Inlet on one side, designed for tight or restricted sites.

XFD-R-One Series Cooling Tower Drawing



COOLING TOWER DEPOT	PROJECT NAME AND LOCATION:	XFD-R-ONE SERIES		
	MODEL NO.:	XFD-R-ONE SERIES		
	DWG NAME:	GENERAL ARRANGEMENT		
	DRAWING NUMBER:	JOB NUMBER:	SHEET	REV:
	A-100		1 of 1	0
SCALE:	NO SCALE			

THIS DRAWING IS THE SOLE PROPERTY OF COOLING TOWER DEPOT INC. USE SHALL BE LIMITED TO THE PROJECT FOR WHICH IT IS INTENDED. NO REPRODUCTION SHALL BE MADE NOR SHALL THIS INFORMATION BE MADE AVAILABLE TO THIRD PARTIES WITHOUT THE PRIOR WRITTEN CONSENT BY COOLING TOWER DEPOT INC. ANY AND ALL PROPRIETARY RIGHTS TO THIS INFORMATION AND DESIGN ARE THE SOLE PROPERTY OF COOLING TOWER DEPOT INC.

REV.	DESCRIPTION	DESIGNED BY:	CHECKED BY:	APPROVED BY:	DATE:
0					
1					
2					
3					
4					

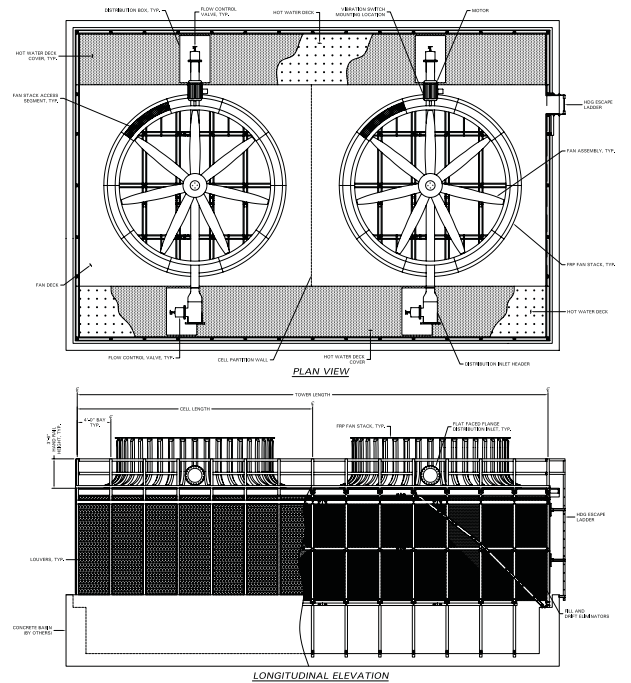
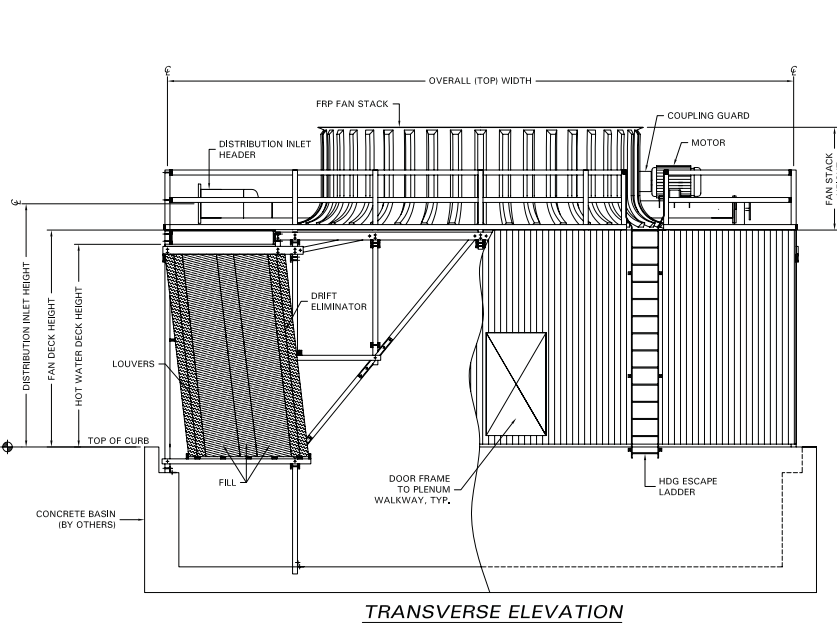
<p>COOLING TOWER DEPOT, INC 651 CORPORATE CIRCLE, STE. 206 GOLDEN, CO 80401 720-746-1234</p>	JOB NUMBER:	NO SCALE	NO. 1 of 1	REV. 0	SHEET 1 of 1	DRAWING NUMBER: A-100
	SCALE:	NO SCALE	NO. 1 of 1	REV. 0	SHEET 1 of 1	DRAWING NUMBER: A-100
	NO. 1 of 1	NO. 1 of 1	NO. 1 of 1	NO. 1 of 1	NO. 1 of 1	NO. 1 of 1
	NO. 1 of 1	NO. 1 of 1	NO. 1 of 1	NO. 1 of 1	NO. 1 of 1	NO. 1 of 1



SK Series
Crossflow - Film Fill - Concrete, Pultruded FRP, Douglas Fir, or Redwood Structure.

Film fill crossflow with PVC packed film fill and a low pump head and flexible for replacement on existing basins.

SK Series Cooling Tower Drawing



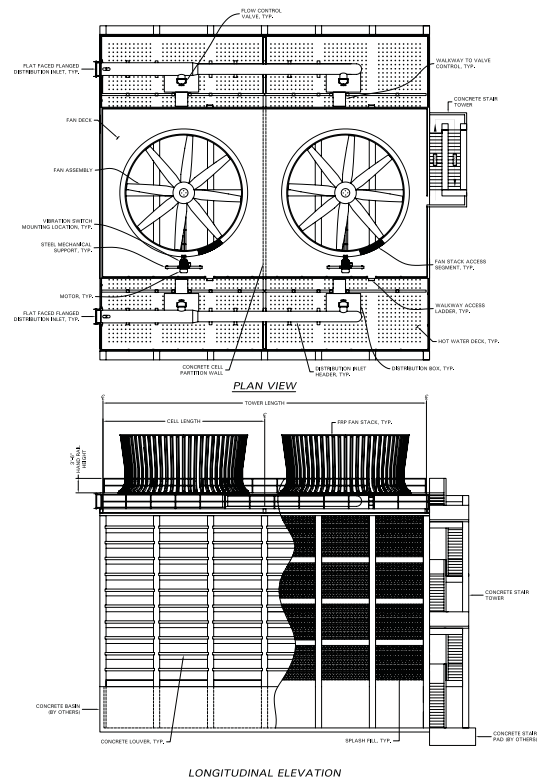
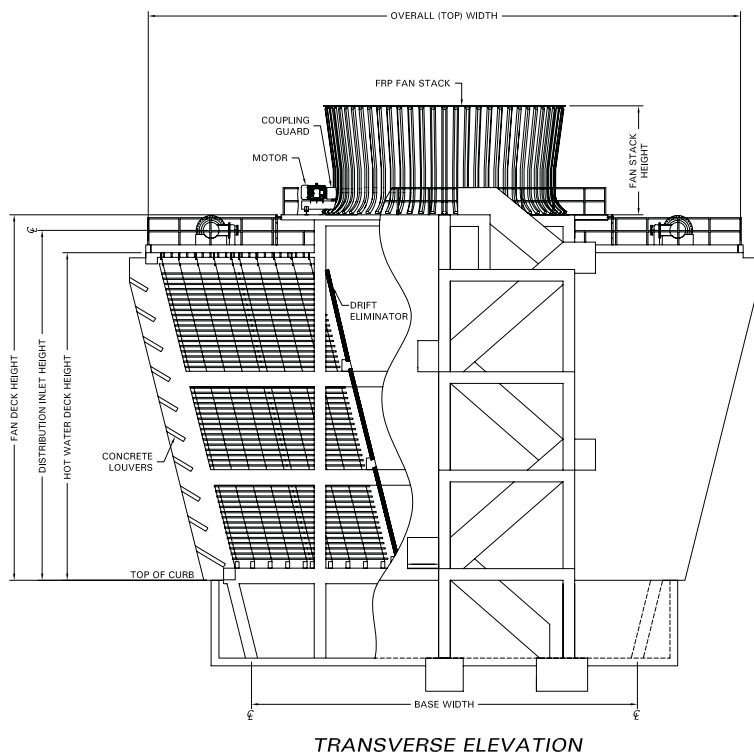
COOLING TOWER DEPOT	PROJECT NAME AND LOCATION:	THIS DRAWING IS THE SOLE PROPERTY OF COOLING TOWER DEPOT INC. USE SHALL BE LIMITED TO THE PROJECT FOR WHICH IT IS INTENDED, NO REPRODUCTION SHALL BE MADE NOR SHALL THIS INFORMATION BE MADE AVAILABLE TO THIRD PARTIES WITHOUT THE PRIOR WRITTEN CONSENT BY COOLING TOWER DEPOT INC. ANY AND ALL PROPRIETARY RIGHTS TO THIS INFORMATION AND DESIGN ARE THE SOLE PROPERTY OF COOLING TOWER DEPOT INC.				COOLING TOWER DEPOT, INC 651 CORPORATE CIRCLE, STE. 206 GOLDEN, CO 80401 720-746-1234	JOB NUMBER:	0	REV:	A-100
	MODEL NO:						SK SERIES	DESIGNED BY:	CHECKED BY:	APPROVED BY:
DWG NAME:	GENERAL ARRANGEMENT	REV:	DESCRIPTION:	REV:	DATE:					
DRAWING NUMBER:	A-100	JOB NUMBER:	REV:	DATE:	DATE:					
JOB NUMBER:	1	SHEET:	REV:	DATE:	DATE:					
SCALE:	NO SCALE	COMMENTS:	REV:	DATE:	DATE:					



**XFC Series
Crossflow - Splash Fill - Concrete Structure.**

Heavy duty industrial crossflow with concrete structure and concrete decking. Tower available with wide range of flows and materials with a large list of options.

XFC Series Cooling Tower Drawing



COOLING TOWER DEPOT	PROJECT NAME AND LOCATION:	XFC SERIES		
	MODEL NO.:	XFC SERIES		
	DWG NAME:	GENERAL ARRANGEMENT		
	DRAWING NUMBER:	JOB NUMBER:	SHEET	REV:
	A-100		1 of 1	0
SCALE:	NO SCALE			

THIS DRAWING IS THE SOLE PROPERTY OF COOLING TOWER DEPOT INC. USE SHALL BE LIMITED TO THE PROJECT FOR WHICH IT IS INTENDED. NO REPRODUCTION SHALL BE MADE NOR SHALL THIS INFORMATION BE MADE AVAILABLE TO THIRD PARTIES WITHOUT THE PRIOR WRITTEN CONSENT BY COOLING TOWER DEPOT INC. ANY AND ALL PROPRIETARY RIGHTS TO THIS INFORMATION AND DESIGN ARE THE SOLE PROPERTY OF COOLING TOWER DEPOT INC.

REV.	DESCRIPTION	DESIGNED BY:	CHECKED BY:	APPROVED BY:	DATE:
0					
1					
2					
3					
4					

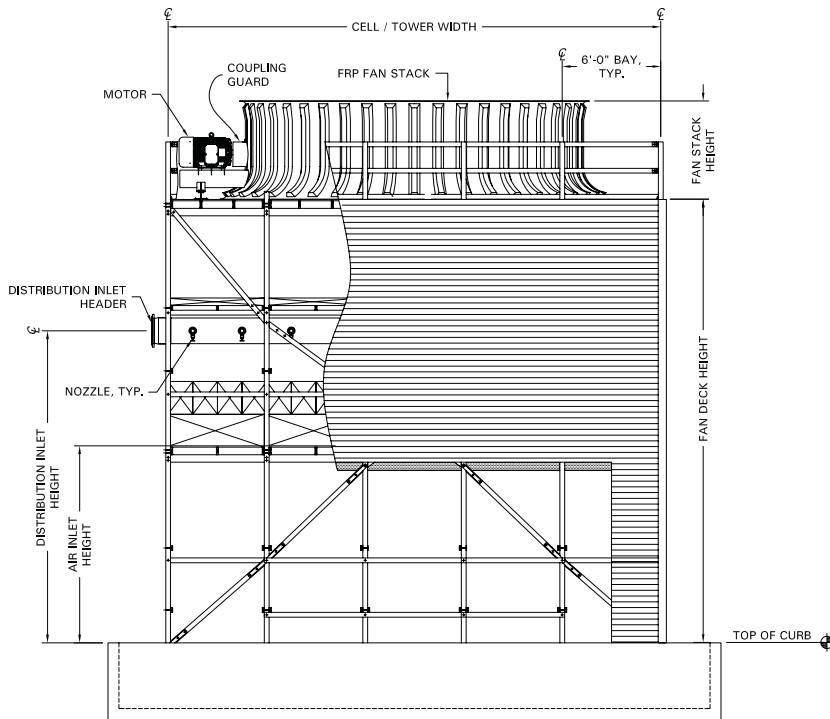
COOLING TOWER DEPOT, INC 651 CORPORATE CIRCLE, STE. 206 GOLDEN, CO 80401 720-746-1234	JOB NUMBER:	0
	SCALE:	NO SCALE
	SHEET	1 of 1
	JOB NUMBER:	NO SCALE



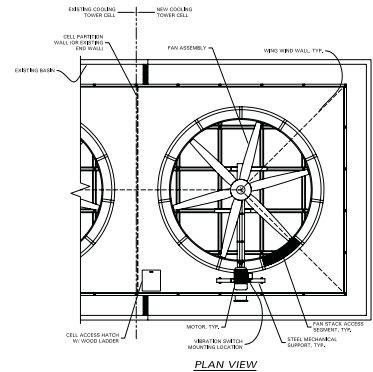
CF & XF Add Cell Series Counterflow or Crossflow Add Cells - Douglas Fir, Redwood, or Pultruded FRP Structure.

Cooling Tower Depot™ can provide counterflow or crossflow add cells to exactly match your existing tower, regardless of original manufacturer.

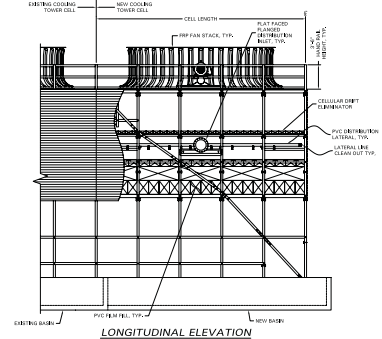
CF & XF Add Cell Series Cooling Tower Drawing



TRANSVERSE ELEVATION



PLAN VIEW



LONGITUDINAL ELEVATION

	PROJECT NAME AND LOCATION:		THIS DRAWING IS THE SOLE PROPERTY OF COOLING TOWER DEPOT INC. USE SHALL BE LIMITED TO THE PROJECT FOR WHICH IT IS INTENDED. NO REPRODUCTION SHALL BE MADE NOR SHALL THIS INFORMATION BE MADE AVAILABLE TO THIRD PARTIES WITHOUT THE PRIOR WRITTEN CONSENT BY COOLING TOWER DEPOT INC. ANY AND ALL PROPRIETARY RIGHTS TO THIS INFORMATION AND DESIGN ARE THE SOLE PROPERTY OF COOLING TOWER DEPOT INC.	
	MODEL NO:		CELL ADDITION SERIES	
	DWG NAME:		GENERAL ARRANGEMENT	
	DRAWING NUMBER:	JOB NUMBER:	SHEET	REV:
	A-100		1 of 1	0
SCALE:	NO SCALE	COMMENTS:		

REVISIONS					
REV.	DESCRIPTION	DESIGNED BY:	CHECKED BY:	APPROVED BY:	DATE:
0					
1					
2					
3					
4					

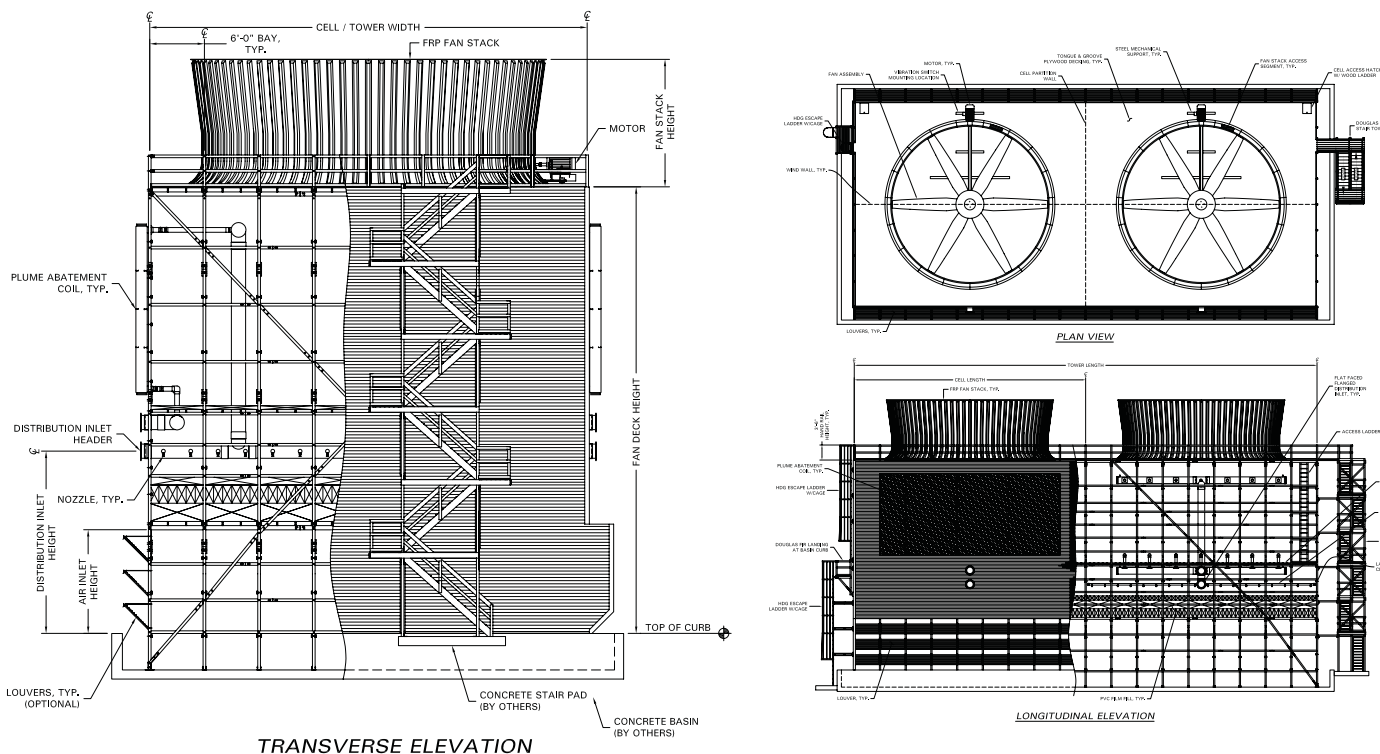
COOLING TOWER DEPOT, INC 651 CORPORATE CIRCLE, STE. 206 GOLDEN, CO 80401 720-746-1234		JOB NUMBER: NO SCALE	SHEET: 1 of 1	DRAWING NUMBER: A-100
---	--	-------------------------	------------------	--------------------------



CF Plume Abated Series Counterflow - Douglas Fir, Redwood, Pultruded FRP, or Concrete Structure.

Available in wood, FRP or concrete. A unique design for low or no plume from the fan cylinder with all the options of the CF series. Low noise tower options also available.

CF Plume Abated Series Cooling Tower Drawing



	PROJECT NAME AND LOCATION:	THIS DRAWING IS THE SOLE PROPERTY OF COOLING TOWER DEPOT INC. USE SHALL BE LIMITED TO THE PROJECT FOR WHICH IT IS INTENDED. NO REPRODUCTION SHALL BE MADE NOR SHALL THIS INFORMATION BE MADE AVAILABLE TO THIRD PARTIES WITHOUT THE PRIOR WRITTEN CONSENT BY COOLING TOWER DEPOT INC. ANY AND ALL PROPRIETARY RIGHTS TO THIS INFORMATION AND DESIGN ARE THE SOLE PROPERTY OF COOLING TOWER DEPOT INC.				COOLING TOWER DEPOT, INC 651 CORPORATE CIRCLE, STE. 206 GOLDEN, CO 80401 720-746-1234	JOB NUMBER: 0 SCALE: NO SCALE SHEET: 1 of 1 DRAWING NUMBER: A-100	SHEET: A-100			
	MODEL NO.:	PLUME ABATEMENT SERIES	REVISED:	DESIGNED BY:	CHECKED BY:				APPROVED BY:	DATE:	
	DWG NAME:	GENERAL ARRANGEMENT	REV.:	0	1				2	3	4
	DRAWING NUMBER:	A-100	JOB NUMBER:	1	1				0		



DL-FRP F Series Counterflow - Modular Film Fill Tower.

Complete FRP Modular Package Cooling Tower. Film fill tower series available in a wide array of flows and design conditions.

Packaged tower standard features:

- Non-Corrosive Fiberglass and Stainless Steel Structure
- High-Quality Components, Made in the U.S.A.
- Efficient Counterflow Design
- 250-5000 gpm Capacity
- Uncomplicated Field Assembly
- Technical Support
- FRP Ladder and Handrails
- Fire-Retardant Resin
- 6' High Fan Stack
- Stainless Steel Oil and Vent Lines

Packaged tower options:

- On Site Installation Service
- Basin Heater
- Two-Speed Motor or Variable Frequency Drive
- Low Oil Cut-off Switch
- Stainless Steel Fan Guard
- Special Color



	PROJECT NAME AND LOCATION:		<small>THIS DRAWING IS THE SOLE PROPERTY OF COOLING TOWER DEPOT INC. USE SHALL BE LIMITED TO THE PROJECT FOR WHICH IT IS INTENDED, NO REPRODUCTION SHALL BE MADE NOR SHALL THIS INFORMATION BE MADE AVAILABLE TO THIRD PARTIES WITHOUT THE PRIOR WRITTEN CONSENT BY COOLING TOWER DEPOT INC. ANY AND ALL PROPRIETARY RIGHTS TO THIS INFORMATION AND DESIGN ARE THE SOLE PROPERTY OF COOLING TOWER DEPOT INC.</small>				COOLING TOWER DEPOT, INC 651 CORPORATE CIRCLE, STE. 206 GOLDEN, CO 80401 720-746-1234	JOB NUMBER: 0 SCALE: NO SCALE	REV. 0 SHEET 1 of 1 NO SCALE	DRAWING NUMBER: A-100
	MODEL NO. DL-FRP F SERIES									
	DWG NAME: GENERAL INFORMATION									
	DRAWING NUMBER: A-100	JOB NUMBER:								
SCALE: NO SCALE	COMMENTS:		REV.	DESCRIPTION	DESIGNED BY:	CHECKED BY:	APPROVED BY:	DATE:		
			0							
			1							
			2							
			3							
			4							



**DL-FRP S Series
Counterflow - Modular Splash Fill Tower.**

Complete FRP Modular Package Cooling Tower. The only splash fill modular package tower available for poor water quality. A very versatile tower, high quality.

DL-FRP S Series Cooling Tower

Packaged splash fill tower standard features:

- Non-Corrosive Fiberglass and Stainless Steel Structure
- High-Quality Components, Made in the U.S.A.
- Efficient Counterflow Design
- 250-5000 gpm Capacity
- Uncomplicated Field Assembly
- Technical Support
- FRP Ladder and Handrails
- Fire-Retardant Resin
- 6' High Fan Stack
- Stainless Steel Oil and Vent Lines
- Polypropylene Splash Fill

Packaged tower options:

- On Site Installation Service
- Basin Heater
- Two-Speed Motor or Variable Frequency Drive
- Low Oil Cut-off Switch
- Stainless Steel Fan Guard
- Special Color



	PROJECT NAME AND LOCATION:		<small>THIS DRAWING IS THE SOLE PROPERTY OF COOLING TOWER DEPOT INC. USE SHALL BE LIMITED TO THE PROJECT FOR WHICH IT IS INTENDED, NO REPRODUCTION SHALL BE MADE NOR SHALL THIS INFORMATION BE MADE AVAILABLE TO THIRD PARTIES WITHOUT THE PRIOR WRITTEN CONSENT BY COOLING TOWER DEPOT INC. ANY AND ALL PROPRIETARY RIGHTS TO THIS INFORMATION AND DESIGN ARE THE SOLE PROPERTY OF COOLING TOWER DEPOT INC.</small>				COOLING TOWER DEPOT, INC 651 CORPORATE CIRCLE, STE. 206 GOLDEN, CO 80401 720-746-1234	JOB NUMBER: 0 SCALE: NO SCALE	SHEET: 1 OF 1	DRAWING NUMBER: A-100	SHEET: 1 OF 1	REV: 0	PROJECT NUMBER: A-100						
	MODEL NO.:													REVISIONS					
	DWG NAME:													REV.	DESCRIPTION	DESIGNED BY:	CHECKED BY:	APPROVED BY:	DATE:
	GENERAL INFORMATION													0					
DRAWING NUMBER:		JOB NUMBER:	SHEET	REV:															
A-100			1 of 1	0															
SCALE: NO SCALE		COMMENTS:																	

COOLING TOWER DEPOT™

The Depot of All Cooling Towers
www.coolingtowerdepot.com

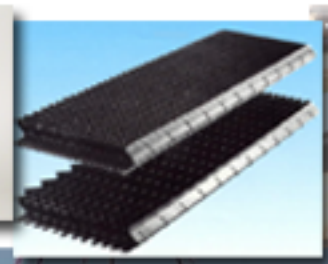
651 Corporate Circle
Suite 206
Golden, CO 80401
(720) 746-1234 Phone
(720) 746-1110 Fax
www.ctdepotinc.com

YOUR DISCOUNT **COOLING** **TOWER PARTS DEPOT**

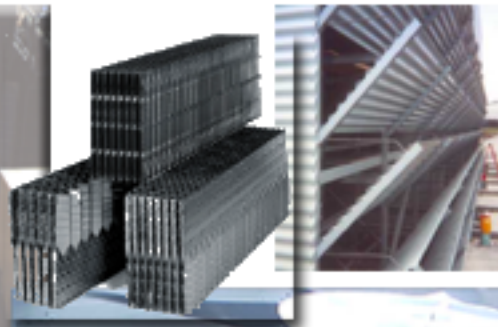
COMPOSITE DRIVE SHAFTS
GEAR REDUCERS
HARDWARE
DRIFT ELIMINATORS
DISTRIBUTION SYSTEMS
FAN STACKS
STRUCTURAL MEMBERS
VIBRATION SWITCHES

FANS / FAN BLADES
CASING & LOUVERS
FILL MATERIAL
FLOW CONTROL VALVES
NOZZLES
ELECTRIC MOTORS
STAIR TOWERS
ESCAPE LADDERS

**QUALITY PARTS FOR COUNTERFLOW, CROSSFLOW, OR HYPERBOLIC
COOLING TOWERS REGARDLESS OF ORIGINAL MANUFACTURER**



BAC-Pritchard
CERAMIC
ECODYNE
FLUOR
FOSTER-WHEELER
GEA
HAMON
LILIE-HOFFMANN
MARLEY
PSYCHROMETRIC SYSTEMS
RESEARCH-COTTRELL
THERMAL-DYNAMIC
TOWER TECH
**MISCELLANEOUS REGIONAL
MANUFACTURERS**



INSTALLATION SERVICES
RECONSTRUCTION SERVICES
CUSTOM FABRICATION
FAST EFFICIENT DELIVERY



GENERAL COMPANY INFORMATION

President: Mr. Steven D. Adams

Senior Vice President: Mr. Bill Howard

Aftermarket Manager: Mr. Micky Fisher

International Sales Manager: Mr. Carl A. Barday

Component Sales & DIR of Procurement: Mr. Mark Carrothers

Special Projects Manager: Mr. Dave Yolton

Regional Sales Manager: Mr. Dennis Sheldon

Remit to Address: 651 Corporate Circle
Suite 206
Golden, CO 80401
Phone: (720) 746-1234
Fax: (720) 746-1110

EIN: 04-3750892

Established: 03-13-2003

Business: Cooling Tower Depot, Inc. consists of the most knowledgeable personnel in the cooling tower industry, specializing in providing high quality, low cost cooling towers. Our company employs 169 professionals to serve your needs.

Business Coverage: United States and selected foreign markets

Business Summary and Objective: Providing the highest quality cooling tower repairs, parts, new towers, and all associated services, at a low cost, is our goal. Cooling Tower Depot, Inc. with collectively over 100 years of cumulative cooling tower experience has the most knowledgeable and experienced staff in the industry. This allows us to provide the best customer service and technical assistance available. No cooling tower is too big or too complex for us, making it effortless for you to get exactly what you need.



Key Personnel

R

Steven D. Adams
President

BS Chemical Engineering – University of Missouri and MS Environmental Engineering – Colorado School of Mines. 20 years experience in the cooling tower industry including designing, manufacturing, erecting, and testing cooling towers worldwide. Former Vice President of Engineering at Psychrometric Systems, Inc. Former Director of Applications and Projects at GEA-TDT. Former Product Manager – New towers at Ecodyne.

E

Bill Howard, P.E.
Vice President

B.S.A.E. University of Colorado, over 16 years experience in structural design and analysis of FRP, wood and concrete cooling tower structures. Over 20 years experience in seismic zone 4 structures. Past Vice President of CTI and past Board of Director for the Cooling Tower Institute. Chairperson for Cooling Tower International Relations Committee and actively involved in Engineering Standards and Maintenance Committee. Former Structural Design Manager for GEA/TDT; former Vice President of Operations for Psychrometric Systems, Inc.

S

Mark Carrothers
Parts / Procurement Manager

BS Business Administration – University of Denver. 14 years experience in the cooling tower industry including procurement, sales management, manufacturing, inspecting, design and product development.

U

Carl A. Barday
International Sales Manager

BS Communications – University of Northern Colorado MA- Organizational Communications – University of Northern Colorado: 13 years experience in the cooling tower industry including international and domestic business development, procurement, sales management, inspecting, and product development.

M

Martin Hout
Secretary

BA University of Illinois, MBA International Finance University of Denver. Certified Public Accountant. 22 years of diversified financial and accounting experience including Global Water Technologies, Golden Aluminum Co., Adolph Coors Co., and Public Accounting. Responsibilities include accounting, insurance, bonding, employee benefits and cash management.

E

Sergio Gutierrez
Applications / Project Manager

BS in Civil Engineering, MS in Structural Engineering – University of Mississippi. 16 years experience including 7 years of thermal design experience, 3 years of structural design

S



Key Personnel

experience, 6 years of general construction and project management, including contract negotiations and administration, as well as direct field experience.

Dan Sheldon
Project Manager

20 years experience in the cooling tower industry, including project management, inspecting, manager of manufacturing facility and field erecting of cooling towers. Former Manufacturing Manager and Project Manager with Psychrometric Systems, Inc. Former Project Manager and Field Superintendent with GEA-TDT.

Steve Schmidt
Project Manager

BS in Mechanical Engineering – South Dakota School of Mines and Technology. Over 15 years experience in engineering, procurement and construction projects. Five years experience in the cooling tower industry including applications, project engineering and project management. Former Project Engineer and Project Manager for GEA-TDT

Dave Yolton
Special Projects Manager

30 years of cooling tower sales, management and engineering experience. 7 years experience as Sales Director / Manager of Repairs. 4 years experience as President of Davenport Cooling Technology. 19 years experience as Vice President / General Manager with Cooling Tower Engineering.

Ian Fletcher
Project Manager

BS Industrial Engineering - Colorado State University. 11 years experience in the cooling tower industry including drafting, designing, manufacturing, erecting and repairing cooling towers worldwide. Former Design Manager at GEA Integrated Cooling Technologies, Inc. Former International Project Manager at Psychrometric Systems, Inc.

Dennis Sheldon
Regional Sales Manager

12 years experience in the cooling tower industry, including, inspecting, sales, shop foreman of manufacturing facility and field erection of cooling towers. Former manufacturing foreman and cooling tower inspector.

Micky Fisher
Regional Sales Manager

20 years of experience in the cooling tower industry including Lillie-Hoffman, GEA and Ecodyne. Experience includes sales, inspecting, testing, manufacturing and erecting cooling towers worldwide. Former National Sales Manager for Process and HVAC markets.

R
E
S
U
M
E
S